

## **Historic, Archive Document**

Do not assume content reflects current scientific knowledge, policies, or practices.





**INDIANA**  
**dahlias**  
**1926**







*MRS. I. DE VER WARNER*

*(Decorative)*

*If we grew but one dahlia, this would be the one.*

*For full description see page eleven.*

*Price - - - \$1.50*

## ANNOUNCEMENT

**M**R. E. L. Kunzman, who formerly owned The Indiana Dahlia Farm, has sold his entire interest in same to Thos. D. Sherfick, who will continue the business under the present name, and who will endeavor to please all patrons from the smallest to the largest, at wholesale and retail.

Mr. Kunzman, who MADE the dahlia in the whole of the Central, Southern and Northern sections of the U. S. A., by his personal enthusiasm over God's most wonderful Flower, and his untiring zeal, will continue hybridization of the dahlia, the aim being to produce perfect stem and fine growing and keeping qualities. These properties he believes very important to the lasting popularization of the dahlia.

He will also be pleased to hear from any friends, or have them call personally, at his home. His address is No. 2300 Slate Run Road, New Albany, Ind. Phone 762A.

Below are given a few new introductions of E. L. Kunzman, and a true description of each. Others are embodied in regular lists.

### Outstanding New Dahlias

**GOLDEN GIANT**—Paeony-flowered, of immense size and wonderful beauty and shape of flower.

COLOR is pure old gold, unchanging and unshaded.

SHAPE is beautiful, the petals being curled and twisted, and having a wonderful metallic lustre.

SIZE is immense.

STEM is long and strong, but the neck is sometimes too weak for the heavy bloom.

PLANT is strong and bushy; healthy.

Price, each tuber, only ..... \$5.00

**GOLDEN VEIL**—Hyb. Cactus of exquisite color (pure cream) and formation of bloom, and very free blooming and large. Stem is long and strong, but neck is weak. However, it is well worthy of your consideration on account of its beauty. Price, per tuber, only \$1.50

**HALO**—Decorative. Shape of Jersey's Beauty. Large size and pure, very light sulphur color. Stems are long and fine in every way. Very free blooming and desirable. Price, per tuber, only, \$2.50

**HEART'S DESIRE**—Decorative. Exquisite light Salmon Rose color. Large. Perfect in form and has very good stem. Price, per tuber, only \$1.50

**SQUARE DEAL**—Decorative. Splendid, full form and beautiful color, which is a soft, creamy yellow at center, shading out to soft Salmon Pink. It is a large bloom on a magnificent stem, and it is positively the freest blooming dahlia we ever grew. Habit: bushy and dwarf. Price, per tuber, only \$2.00

**KING OF COMMERCE**—Decorative. This is not a new variety, but the most perfect growing dahlia ever introduced. Needs and WANTS NO EXTRA ATTENTION and will produce blooms of medium large size, set squarely on fine stems, 15 to 36 inches long, which keep until they dry up. The REAL cut-flower dahlia. Color is a rich tango, lighted gold. Price, per tuber, only 75c

*NOTE—During the past season there were no flowers available to the florist except dahlias—We do not know how we could have supplied the extreme demand for cut blooms had it not been for such varieties as Halo, Square Deal, King of Commerce, etc. You cannot go wrong in ordering them.*

## TO OUR FRIENDS AND CUSTOMERS



CONTINUING the business policies of Mr. E. L. Kunzman is my aim. His heart-to-heart, simple, straight-forward methods won your reward and affection and, heartily meeting my approval, I can do no better than to continue the same.

I want you pleased. If you are not, let me know and I will see that you become so.

Like Mr. Kunzman, I am an extreme lover of the Dahlia. No greater flower has God created, and I believe, if you are a genuine flower lover, you will agree with me.

Don't fail to read the entire catalogue, or you may miss something which will be of interest to you.

I will especially appreciate personal letters or suggestions from you, and will thank you for any good word you may give your friends concerning me.

With best wishes,

THOMAS D. SHERFICK, President

*INDIANA DAHLIA FARMS, New Albany, Indiana*

# Instructions and Information

**ORDER EARLY.** Use the order blank enclosed and fill it out completely. Name second choice where possible, as we may be out of some varieties wanted.

**SELECTION OF VARIETIES.** If you do not know just what varieties to order and want an especially good selection at a lower price, leave the matter with us and we will treat you right. The chances are that you will receive a selection that will please you better than your own.

**SHIPMENT** will be made as requested at about the proper time to plant in your locality. Most people plant dahlias too early in season to bring best results.

**PACKING** will be free on all orders unless otherwise noted and our method will bring them to you in splendid condition. Also, unless noted otherwise, **POSTAGE WILL BE PREPAID.**

**DESCRIPTION OF VARIETIES.** We do not believe in a lengthy description, therefore we give a short, concise description which will give you a better idea. If a dahlia has a certain outstanding fault, we will mention it.

**SUBSTITUTION.** Should you wish no substitution, please state so in order blank. Sometimes we are sold out of varieties wanted and, if acceptable, we would substitute a really finer sort, without added cost, rather than disappoint you in your plans.

**GUARANTEE.** Although we have a system as near perfect as possible, errors will occasionally creep in; but we wish to assure you that any error reported will be satisfactorily adjusted.

**REMITTANCE** by money order, check or cash in registered letter.

**OUR PRICES** are as low as can be for good, clean, true-to-name stock, as you will find out by comparison with others. The price of a tuber not always indicates its value. We have varieties at a low price which are more valuable than many high priced sorts. Therefore, where unacquainted, we would advise your leaving selection with us.

**WE SAY AGAIN:** Fill in the order blank completely, giving name and complete address.

---

## Dahlia Don'ts

**DON'T** work the soil until it is dry enough to pulverize.

**DON'T** be afraid to work it deep and fine.

**DON'T** plant before soil is nice and warm.

**DON'T** plant vertical; plant as near horizontal as possible.

**DON'T** water when planting, or later, unless absolutely necessary.

**DON'T** let the soil harden; keep it worked.

**DON'T** let more than one sprout grow.

**DON'T** forget to stake plants before they grow up.

**DON'T** fail to fertilize when buds begin to show.

**DON'T** allow the old bloom to remain on plants.

**DON'T** fail to BOOST the dahlia; and—

**DON'T** buy from anyone just because they are cheap, as you

**DON'T** know what you are getting! Finally—

**DON'T** forget to read everything in this catalog.



# Culture of the Dahlia

**N**O FIRM or individual can guarantee the growth of any plant, but if the following directions are followed, anyone will have success with the dahlia, which is easy to grow and returns much for a little care.

**WHERE TO PLANT.** The sunniest, openest spot you can find is the best.

**FERTILIZING.** Unless your soil is very poor, do not add fertilizer before planting, or until flower buds appear. If soil is very poor, add good rotted manure, or leaves, and spade in well and deep.

**WHEN TO PLANT.** Not until soil is good and warm and dry.

**HOW TO PLANT.** After soil is thoroughly pulverized to a nice depth, plant tubers horizontally (not vertically) about four or five inches deep, in rows three and a half to four feet apart, and allow two to three feet in row between plants. Cover with loose soil, but don't water.

**STAKING.** Put a strong stake to each plant, or a heavy stake to about every 20 feet of row, stringing wire 12, 24 and 36 inches above soil level, tightly to these stakes and immediately above the plants, so that when plants grow up into the wires they can be tied to same. Use good strong wire and fasten well to stakes.

**PLANT TREATMENT.** Should many sprouts appear above soil, about 12 to 18 inches, cut back to about one half its height, thereby causing it to branch and become stalky, and more self-supporting. Keep top soil loose and clean, but do not water unless exceedingly dry weather demands it. Should you wish larger blooms, these can be obtained by removing all buds excepting one from each lateral branch. We, however, do not practice disbudding and yet have extremely large flowers. All full-bloom flowers should be removed, as the more you cut, the more bloom will be produced by the plant. As mentioned before, when the flower buds appear, broadcast a good phosphate fertilizer between rows and, if possible, mulch with leaves, old manure or other material. Fertilizer may be applied about every two weeks, at the rate of about a big spoonful to the plant.

**HARVESTING.** Dig roots any time after a heavy frost, cut the tops off an inch or more from the clump. Tap the cut end if soil adheres too heavily.

**STORING.** After digging, store in a cool moist place where frost cannot reach them. If you must store in a dry or warm place, put them in boxes or barrels, clumps upside down, and cover with fine soil, sand or other material. If necessary, moisten this material during storage. In the spring when eyes have formed on clumps, divide to a single tuber if possible so that each division has an eye, and if it is not yet planting time, store away again. Never expose the tuber to the drying air for very long.

## Our Leaders For 1926

THE following list contains dahlias which have outstanding merit or attraction, and those which we especially recommend to the discriminating buyer. Our descriptions will be found concise and correct.

**A. C. Lawrence, H-C**—In this dahlia we have one of the best hybrid cactus dahlias ever introduced. It is very large and of good substance. The color is a fine shade of flesh pink. As a keeper, when cut, it cannot be excelled. Price, \$1.50

**Alex Waldi, Dec.** — Creamy yellow overlaid with delicate salmon pink. Splendid form with good stems. Price, \$1.50

**Ambassador, C.** — Flowers are immense size, held erect on stems that are strong and stiff. Color is a soft yellow center with salmon, amber and pink shades gradually deepening towards the tips of the petals. Price, \$2.00

**Amun Ra, Dec.** — This immense dahlia resembles the setting sun. The outer petals of the mammoth blooms are of gorgeous shades of copper and orange, shading to gold and amber, and deepening in the center to a dark reddish bronze. The blossoms keep for days when cut. The stems are long, erect and very stout. Price, \$2.00

**Apple Blossom, C-D** — New, large, soft rose pink. Usually blooms very early with us. Price, \$1.00

**Attraction, H-C** — A large, elegant flower of a clear lilac rose, borne on long stiff stems and a dahlia of exceptional merit. Always in demand as a cut flower. Price, 75c.

**Azalea, Dec.**—An immense bloom formed of many rows of long narrow florets, giving it an unusually attractive as well as uncommon shape. Color: soft, creamy yellow with outer petals suffused pink. Price, 75c.

**Ballet Girl, C.**—This is one of the most striking dahlias in our gardens. Some of the flowers are orange-edged white, others pure orange and still others a variation of white and orange, all on the same bush. A splendid cut flower, and none better for exhibition.

This is one dahlia that ought to be in every one's collection. See illustration on page 7. Price, \$1.50

**Ben Wilson, Dec.**—A grand new variety of large size (six to ten inches without disbudding) with excellent stems. Color is a bright buff, heavily shaded with rich red and also tipped with yellow. Very attractive as a garden plant or on exhibition. Price, \$1.25

**Bertha Jost, Dec.**—A very handsome, free-flowering large dahlia, and carried on long stiff stems. Base deep sulphur, outer petals blended with peach pink, the center tinted with burnt orange. A wonderful keeper when cut. Plants, \$2.00. Tubers, \$3.00

**Bashful Giant**—One of the largest flowering dahlias ever produced. The gigantic blooms are excellent for exhibition where size is one of the requisites. It is also of great merit for its beautiful color, being apricot with golden shadings. Price, \$2.00

**Bonnie Brae, Dec.**—Giant cream, shaded bluish pink. The flowers are produced on long, very slender stems. Always in bloom. Price, \$1.50

**Break O'Day, H-C**—A strong, vigorous grower and a free bloomer. A delicate, clear sulphur yellow tinted to sulphur white at the tips. The flowers are of great substance, illuminated by a satiny sheen, giving the flowers a waxy appearance. Price, 75c.

**Breeze Lawn, Dec.**—This is an early and profuse bloomer. Intense fiery red, large size, perfect form and full center. Price, \$1.00

**California Beauty, C.**—A new shade in cactus. Mammoth amber copper on perfect stems. Very attractive. Price, \$1.00

**Cantean, Dec.** — Mammoth Shrimp pink. This dahlia closely resembles Hort Fiet, but has much better habits. Price, \$1.00



*BALLET GIRL*

*(Cactus)*

*Varying shades of orange and white.*

*For further description see page six.*

*Price - - - \$1.50*



**Carmencita, Dec.** — Immense clear yellow-penciled scarlet. Attracts much attention in our gardens.

Price, \$1.00

**Cath. Wilcox, Hyb., Dec.**—Flowers refined of form and of a most attractive color. White; points of petals tipped cerise.

Price, \$2.00

**Champagne, Dec.**—This is undoubtedly one of the largest dahlias that grows. The color is a delightful warm shade of autumn. Stem is heavy and holds the massive flowers absolutely upright.

Price, \$3.00

**Charm, Dec.**—One of the most admired dahlias. A pleasing shade of burnt orange, shading to yellow. Stems good. Free flowering and a good keeper.

Price, \$1.00

**Cigarette, H-C**—Creamy white, heavily edged orange, but no two flowers are alike. Bloom is very large, held well above the foliage on good stems. See illustration on page 21.

Price, \$1.50

**Comstock, Dec.**—An immense yellow. Begins to bloom very early and continues through the season. This is a bargain, indeed, if you like yellow dahlias. Try one.

Price, 75c.

**Daddy Butler, H-C.**—Rose carmine, reverse silver white. Stem is perfect and a very profuse bloomer. Blooms will keep a week when cut.

Price, \$3.00

**Dakota, Dec.**—New. Immense red brown. Very good for exhibition. You can't go wrong in ordering this dahlia.

Price, \$2.00

**Darkeye, Dec.**—A large, splendid blossom with good stem. Color: flesh pink with a dark center, like an eye, before the flower is fully developed.

Price, 75c.

**Della V. Potter, Dec.**—A pleasing shade of lavender, some of the flowers having white tips. A fine grower and flowerer.

Price, \$1.25

**Don Williams, Dec.** — A beautiful new shade of lavender, each petal being tipped snow white. Fine stems, low growing plant.

Plants, \$2.00. Tubers, \$3.00

**Dorothy Robbins, Dec.** — Orange shaded dark buff. Strong grower and a profuse bloomer.

Price, \$1.00

**Dr. H. L. Tevis, Dec.**—Salmon rose, suffused old gold. Fine exhibition flowers, borne on strong stems.

Price, 75c.

**Edith Cavell, P.**—Color: bronzy copper, tinted crimson. Very large blossoms and a profuse bloomer.

Price, \$1.50

**Eastern Star, Dec.**—Color is a soft saffron yellow with old gold shadings. Flowers of great substance and good keeping qualities, with full centers held erect on strong stems. Free flowering; grows ten inches without disbudding.

Plants, \$7.50. Tubers, \$10.00

**Earl Williams, Dec.**—Giant flowering dahlia, color of a brilliant crimson and white, well distributed. Free bloomer. One of the finest and most attractive dahlias ever introduced.

Price, \$2.00

**E. T. Bedford, Dec.**—Fine exhibition flowers of purple with lighter shading, giving it the appearance of a silvered purple tone. Profuse bloomer.

Plants, \$2.00

**Edith Wooster, Dec.**—Lovely blending of golden yellow and sunset red that is hard to describe, and which appeals to everyone. Large blooms on very long stems and a free bloomer.

Price, \$1.00

**Embassador, Dec.**—Dark red, shaded maroon. Flowers attain an enormous size.

Price, \$1.50

**Emily D. Renwick, Dec.**—Irridescent rose. A very free and early bloomer. Flowers keep well when cut.

Price, \$1.00

**Esther Holmes, H-C**—One of the very finest hybrids for cut flowers. A deep lavender pink. Profuse bloomer, flowers held erect on strong stems.

Price, \$1.00

**Emma Marie, H-C** — A pleasing shade of clear pink with a creamy white center. It is a robust grower, producing deep, full-centered blooms on three to four foot stems.

Plants, \$3.00



**Esther Hunt, H-C** — The large blooms are composed of long, well-rolled petals with serrated tips. Even when the flower has faded and the outer petals are falling, this Hybrid Cactus never shows center. The vivid colored flowers of oriental orange make a striking display. Exceptionally fine long stems. Price, \$2.50

**Ethel Mower, Dec.** — An exquisite shade of shell pink, carried on long stiff stems. Fine exhibition variety. Plants, \$1.50

**Forest Loma, P.**—Deep cerise pink, blotched and streaked canary yellow with pure yellow at center. Very large and the flowers stand erect on good stems. Price, 75c.

**Frances Lobdell, H-C**—The color is mellow pink, shading lighter to the center. A very free bloomer on cane-like stems. Like all good varieties, it must be seen growing to be appreciated. Price, \$2.00

**Frau G. Schieff, Dec.**—A beautiful blending of apricot, orange and yellow with reverse of petals coral red. Early and continuous bloomer. Plants are of good habit. Very popular. Price, \$1.00

**Futurity, Dec.**—Clear salmon rose. Very fine large flower on strong stems. Size, six to seven inches. Price, \$1.00

**F. W. Fellows, C.**—Flowers of immense size. Composed of numerous long, narrow, incurved petals of a lively orange-scarlet. This is one of the largest and finest autumn shade varieties. Should be in every collection. Price, 75c.

**General Miles, H-Show**—Lavender pink, streaked purple. This has monster blooms and attracts much attention in our gardens. Price, 75c.

**Geo. L. Stillman, H-C**—Color a very rich, velvety deep maroon. In size it is a mammoth, having been grown to measure eight to eleven inches across, on good stems. Price, \$1.00

**Geo. Walters, C.**—Flowers of immense size. Color a rich coppery, old gold, tinting to buff at the center.

Cught to be in everyone's collection. Price, 75c.

**Gladys Sherwood, H-C**—An immense pure white blossom, deep and full, held very erect on splendid stems. A most popular white. Price, \$1.00

**Gloriana, Dec.**—Monster old gold, darker center. Profuse bloomer, and a dahlia that must be seen to be admired. Price, \$1.50

**Gorgeous, P.**—This dahlia named itself. It is gorgeous. The color is yellow and bright scarlet. Stems, long and stiff. Price, \$2.00

**Hattie Finger, Dec.**—Color is pale rose purple with a deeper center. Blooms stand well above the foliage. Price, \$1.25

**Howard Wright, Dec.** — Immense mauve pink. Very prolific bloomer. Long, slender stems. Price, \$1.50

**Hercules, Dec.**—Quilled of enormous size. The color scheme is a symphony of tangerine and deep yellow. Strong, stout stems. Price, \$2.00

**Insulinda, Dec.** — A distinct form with petals twisted and curled. Stems are two to three feet long and flowers are very large. Color, a rich satiny yellow, shaded russet orange. Price, \$1.25

**Islam Patrol, Dec.**—A stunning red and gold flower that attracts attention wherever shown. Plants, \$1.50

**Isabel Street, Dec.**—A new eastern variety in a yellow overlaid with carmine. Good stems. You will like it. Price, \$1.50

**Jean Chazot, H-C**—Nasturtium red, suffused gold, vigorous grower and profuse bloomer. Price, \$1.00

**Jersey's Beauty**—A perfect bloom of erosion pink carried high above the foliage on long, wirey stems. A perfect true pink. Wonderful keeper when cut, therefore good as an exhibition flower or for commercial purposes. Price, \$5.00

**Jersey's King, Dec.**—A fine grower, the immense flowers of carmine, toning to old rose, being carried on long, stiff stems. Price, \$2.50



**KITTY DUNLAP**

**Jersey's Gem, Dec.**—Large exhibition dahlia of a pinkish lavender, held erect on cane-like stems well above the foliage. Plants, \$2.50

**Jersey's Pride, H-C**—The immense flowers are borne on long, straight stems. In color, a blending of yellow, amber and pink. Price, \$2.00

**John H. Slocomb, Dec.**—A beautiful dahlia of comparatively low growth. The flowers, which are very large and very abundant, are intense velvety red. See illustration on page 11. Price, \$1.00

**John Lewis Childs, H-D**—Yellow, suffused, splashed and striped with brilliant scarlet, and generally tipped white. The size is immense. The stem is stiff. Price, \$1.00

**Jubilee, H-C**—New. Large, beautiful orchid pink. Waved petals. A dahlia that must be seen to be admired. Price, \$2.50

**Judge Marean, Dec.**—Very large flower of perfect type and difficult to describe, produced on long, stiff stems. A blending of growing salmon pink, red, iridescent, orange, yellow and pure gold. One of the most beautiful dahlias ever created. Price, \$1.50

**J. W. Davis, Dec.**—A beautiful big dahlia shading from deep, velvety cerise in center to a lighter cerise at the edges. The blossoms keep their size and form till the end of the season, and last well when cut. Splendid for exhibition. Price, \$1.50

**Kalif, H-C**—Its brilliant pure scarlet color and strong stout stems make it one of the most useful dahlias, both for cutting and exhibition. Price, 75c.

**King of Commerce, Dec.**—Color, tango with golden suffusion, most appropriate to autumn. Medium-sized flowers produced on 18 to 36 inch stems without disbudding. Medium height, branching, robust and healthy, always free. Without question one of the best cut flower varieties grown. Price, 75c.

**Kitty Dunlap, Dec.**—A very free-blooming, fine-form dahlia of American Beauty rose. The stems are long and stiff. We recommend this dahlia highly for exhibition and cutting. Price, \$1.00

**La Favorita, H-C**—A beautiful, deep orange shade, each bloom carried on a strong stem. Perfect form. Showing a full center even late in the season. Price, 75c.

**La Gross Bette, Dec.**—Very large, deep maroon red. An early and free bloomer. Always perfect. Price, \$2.50

**Lolita Velasco, C.**—One of the finest large white cactus. Very fine stems, and flowers are held well above the foliage. Price, \$2.50

**Marguerite Bouchon, C.**—A lovely, brilliant rose-pink with a suggestion of white at the center. Highly recommended. Price, 75c.

**Margaret Masson, Dec.**—A beautiful, silvery rose pink of great depth and size. Wonderful exhibition variety on account of its good keeping qualities and fine upright stem. Very free bloomer. Awarded many prizes in the east. Plants, \$5.00

**Mephistopheles, Dec.**—As an exhibition variety, this dahlia has no peer. Enormous blooms held perfectly erect on gigantic stout stems. Will keep for four days at an exhibition and continue to grow. Plants are of extraordinary vigor and free-flowering. Color is a ruby red showing an infinitesimal golden yellow point at the very ends of the petals, thereby greatly enhancing its effectiveness. Price, \$1.50

**Mariposa, C.**—An immense flower of bright, yet delicate, pink; shading deeper at center. Blossoms abundantly all season, holding its center throughout. The stems are long and stiff, and the flowers are fine both for exhibition and cutting. Price, \$3.00

**Merrick, Dec.**—A glorious shade of light maroon tipped and reverse of petals mahogany. A combination that has instantly appealed to all who have seen it. Fine stems and a good keeper. Very large and free bloomer. Plants, \$2.00

**Mildred Slocomb, Dec.** — Large mauve pink, center light. Flowers produced on long stems. Plants very robust. Price, 75c

**Millionaire, Dec.**—A giant lavender shading to white at center. Dwarf grower. One of the largest dahlias in existence. Very popular and in great demand. Price, \$1.00

**Miss America, H-C** — Color, rich orange buff, blending toward the center, lemon chrome. The long petals are wavy, twisted and curled. The plant is a very free grower. Flowers produced on long stems. Plants, \$2.00

**Mr. Crowley, Dec.**—One of the most exquisite dahlias on the market, attracting immediate attention wherever exhibited. A bright, glowing shade of salmon pink, base of petals yellow, foliage extra good in color and substance. Plant is of dwarf habit. Price, \$2.50

**Mr. H. C. Dreselhuys, Dec.**—Very new. Exact shade of Delice, but free blooming. Price, \$1.00

**Mrs. Carl Salbach, Dec.**—An immense bloom of a lovely, mauve pink, shading lighter to the center and every petal outlined in deep mauve. The stems are extremely long and strong, holding this immense blossom proudly erect above a tall, vigorous plant. A most valuable and useful exhibition and cut flower variety. Price \$1.00

**Mrs. Edna Spencer, C.**—An exceptionally fine variety for all purposes. Large size, fine form and, above all, a free bloomer on long, erect stems. Color, silvery lilac, shading to bright orchid pink. Price, 75c.

**Mrs. Frederick T. Street, C.**—Purple crimson, tipped white, on long up-



JOHN H. SLOCOMB

right stems. A gem for cutting and exceedingly attractive. Price, \$1.50

**Mrs. C. Cooper, C.**—Buff, outer petals suffused salmon. An immense flower. Price, \$1.00

**Mrs. E. F. T. Smith, H-C**—Creamy white shading to a lemon tint in the center, producing blooms up to 10 or 12 inches without disbudding. It is a profuse bloomer on strong stems. Price, \$1.00

**Mrs. I. De Ver Warner, Dec.**—This variety immediately attracts attention wherever grown, for its charming color, large blooms and very long, strong, wirey stems. It is a refined, deep mauve pink, beautifully formed, exquisite shade, and acknowledged by all dahlia experts who have had the pleasure of growing it to be one of the finest dahlias ever produced. Grows well in any soil or climate. See illustration on page one. Price, \$1.50

**Mrs. Nath. Slocomb, Dec.** — Mammoth, deep, pure yellow. Fine form, borne on erect stems. Price, \$1.00

**Mrs. Jessie Seal, P.**—A magnificent old rose with golden shadings. It has a long stiff stem, held high above the foliage and is an excellent cut flower. Price, 75c.

**Mrs. John T. Sheepers, Dec.**—Center clear canary yellow gradually changing to a delicate shade of pink on the outer petals. Very large flowers standing well out of the foliage on strong stems. Price, \$2.50





**N. C. 4**

**Mrs. R. R. Strange, Dec.**—Burnished copper, shaded old rose and go.d.  
Price, **75c.**

**Mrs. W. E. Estes, H-C**—One of the finest white dahlias of its type. The large, deep blooms are held on strong stems. A most graceful and beautiful flower.  
Price, **\$1.00**

**Nancy Helen, Dec.** — A delicate shrimp pink blossom on long, wirey stems. A very desirable florists' dahlia.  
Price, **\$1.25**

**N. C. 4, Dec.**—A very beautiful flower. The color is about equally divided with scarlet and white, the florets are more or less striped the whole length with yellow and white. Reverse side of petals are white and yellow shadings.  
Price, **\$1.00**

**Nobilis, Dec.**—This is almost a counterpart of Earl Williams, of which it is a sprout. Brilliant crimson and white. Its bright coloring makes it very attractive. Fine, stiff stems and striking coloring make it a good cut flower.  
Price, **\$2.00**

**Oregon Sunset, Dec.**—Large blooms of rich, golden yellow, heavily suffused and dusted bronzy crimson. Distinct and irresistible combination of colors. Free flowering and a vigorous grower with long stems.  
Price, **\$1.00**

**Osam Shudow, Dec.**—A delightful old rose, slightly suffused with lilac, well above the foliage on remarkably and shading to yellow at the center.

The big, heavy, loose petals produce a flower more like a gigantic rose than a dahlia. The huge blossoms are held stiff stems.  
Price, **\$2.50**

**Our Country, Dec.**—The ground or main color is a very deep purple while the florets are heavily tipped pure white. It is mammoth and the formation is wonderful. It is a very deep heavy flower with a never failing center. The colors run very uniform. It was offered to the public in 1923 for the first time at \$50.00 per bulb.  
Price, **\$10.00**

**Papilion**—Another beautiful dahlia of a delightful shade of old rose with golden lights. A wonderful blending of color that is extremely beautiful. The stems are long and strong.  
Price, **\$2.50**

**Patapasco, H-C** — Giant. Silvery mauve, rose and pink. Always loaded with bloom.  
Price, **\$1.00**

**Pat O'Mara, Dec.**—The color is an unusually soft and pleasing shade of orange buff, slightly tinged neyron rose. Good keeping qualities.  
Price, **\$1.00**

**Paul Michael, Dec.**—An immense flower of bright apricot and bronze shadings. Good stems and unexcelled for exhibition. It belongs in the largest dahlia class. Can be grown easily to 10 to 12 inches. See illustration on page 15.  
Price, **\$1.50**

**Pride of California, Dec.**—Dark rich crimson of pleasing form and large size. Flowers held erect on splendid stems. One of the best red decorative dahlias for cutting yet introduced.  
Price, **50c.**

**Princess Pat, H-C** — A charming flower of old rose. Early in the season petals will be splashed with red. Blossoms are large and carried on excellent stems.  
Price, **\$1.50**

**Prinz Carvel, Dec.**—New. The most striking of recent years, being deep maroon, with heavy white tips.  
Price, **\$1.00**

**Rookwood, Dec.**—The color is a pure bright cerise rose. The immense flowers are held far above the low-growing and spreading bushes on excellent stiff stems, and are always perfect.  
Price **\$4.00**



**Rosa Nell, Dec.**—A clear bright rose—a rare color in dahlias—which attracts immediate attention. An immense bloom of very fine formation with extra long stiff stems, held high above a strong vigorous plant of beautiful foliage. Price, \$1.50

**Ruth Van Fleet, H-C**—Giant. Canary yellow. Flowers produced on good stems. Price, \$1.50

**Salmonea, Dec.**—Mammoth pure salmon. Flowers of good size and wonderful stems. Price, \$2.50

**Samson, Dec.**—Red tipped and shaded yellow. A fine flower and a free bloomer. Price, \$1.25

**San Mateo, Dec.**—The largest and handsomest fancy or bi-color dahlia. A deep yellow, heavily striped and splashed scarlet, of great substance. Fine formation and good stems. Price, \$1.25

**Sequoia Gigantea, Dec.**—Very large full flower of buttercup yellow. Flowers are borne well above the foliage. Tall and very robust grower. Price, \$1.00

**Shannon, Dec.**—A large bold flower on long stiff stems. This wonderful new dahlia cannot be excelled as a cut-flower or garden variety. Without disbudding it often measures 7" across and 5" deep. Will last a week when cut. The color is a deep golden orange overlaid with a silvery sheen causing it to glisten in the sun or artificial light. (See illustration on page 19.) Price, \$2.00

**Shudow's Lavender, Dec.**—A beautiful lavender blossom of exquisite coloring. Fine large flowers with long, stiff stems, held high above the lace-like foliage. Price, \$3.00

**Snowdrift, Dec.**—Pure white, full deep built flower with broad petals. Low bush. One of the best white decoratives. Price, \$1.25

**The Billionaire, P.**—This is a monster paeony of a beautiful shade of golden orange with pendant stem. Holds its own with the very best. Price, \$1.00

**The Grizzly, Dec.**—A great, dark, velvety maroon beauty. One of the best and most prolific. Stems three to four feet long. Extra large flowers. A prize winning novelty. Price, \$1.50

**Tom Lundy, H-C**—The bold, crimson flowers measure seven to nine inches and are full to the center. Excellent stem and a free bloomer. Does well in any kind of soil. Price, \$1.00

**U. S. A., H-C**—Color is rich, glowing, deep orange. Flowers of enormous size and splendid form. Bloom early and continually. This is a dahlia that should be in everyone's garden. Price, \$1.50

**Wizard of Oz, Dec.**—One of the largest dahlias grown. The color is a glowing, amber pink, soft in tone. The plant is a strong grower and flowers are held erect on stout stems. Price, \$4.00

**Wm. Slocomb, Dec.**—A fine, large flower, well formed, of a beautiful shade of canary yellow, shading to deep yellow towards the center. An exceptionally fine flower, carried on long stiff stems well above the foliage. One of the best. Price, \$1.00

**World's Best White, Dec.**—Absolutely the best white dahlia. It is a fine bloom and has the size, stem and quality. It is a prolific bloomer. Price, \$3.00

**Zeus, Dec.**—The color is a wonderfully rich, glowing red, each petal distinctly tipped yellow. A giant without trace of heaviness. Long, stiff stems and good habits all around. Price, \$5.00

# INDIANA dahlias

## Our General List for 1926

THE following list of dahlias contains those varieties which we can recommend to all and any ON THEIR MERITS. Many of these are far superior, in general, to some of the high priced ones, so don't be afraid to order any dahlia on account of low price. We endeavor to give you a true idea of its color, size, shape and habits in our short description. Any fault will be mentioned.

Should you not find any varieties you wish listed in this catalog, write us as we grow at least 800 varieties NOT LISTED IN THIS CATALOG, and will be glad to supply same to you at the correct price.

A. C. Ide, P-D., very large, velvety Maroon, shaded Purple .....	\$.50
A. D. Livonia, S., medium size, Shell Pink, very fine cutflower .....	.25
American Beauty, Hyb-D., Unnebse Crimson .....	.35
Anna Bosch, H-C., striking color, large pale Yellow, striped Pink .....	1.00
Antelope, C., Yellow, suffused Red .....	.35
Annelie Dufour, C., strikingly beautiful color and shape, Amber, Orange and Salmon, striped Pink .....	.35
Apex, D., Autumn Buff, crinkled and curled petals; very attractive .....	1.50
Arthur Le Favour, B., Soft Yellow, striped and specked Crimson .....	.50
Aster, D., medium size; lovely soft Pink .....	.25
Auguste Nonin, C-D., large rich Red .....	.35
Austin Cannell, C., very free and early, Orange Scarlet .....	.25
Aviator Garros, C., one of the most beautiful dahlias, Yellow .....	.50
Beauty, C., Rosy Pink; fine .....	.50
Beauty of Kent, D., Crimson, heavily tipped White .....	.20
Beloit, C., giant Purple Garnet, long stem .....	1.00
Bergh Van Heemstede, D., Clear Yellow, tinted Pale Pink .....	.35
Bertha Bernstein, S., large quilled light Lavender, perfect .....	.35
Bertha Delaire, S., pure White; good .....	.35
Bertha Horne, H-C., Golden Yellow and Bronze, large .....	1.00
Bessie Boston, D., heavy, serrated, petalled bright Red .....	.35
Billie Burke, D., Primrose, suffused Pink, speckled Lavender .....	1.00
Black Beauty, P., mammoth Blackish Maroon, free .....	.75
Black Hussar, S., medium-sized dark Maroon .....	.15
Bonnie Blue, Hyb-D., Lavender Blue; extra stem .....	.20
British Lion, C., huge, tawny Apricot .....	1.00
Caecilia, P., large pale Yellow .....	.35
Caleb Powers, S., fine light Pink .....	.35
Candeur, C., one of the best White Cactus .....	.35
Caprice, P., deep Cream, tinged Flesh .....	.50
Capucine, P., very bright large Red .....	.35
Carnelian, P., large Cadmium Yellow, center of petals Pink .....	.50
Cath. Duer, D., irridiscent Red; beautiful, but late .....	.15
Challenger, D., large striking Yellow, overlaid Crimson .....	.50
Chas. Burgess, H-C., light Scarlet, large .....	.25
Chas. Sherbrooke, H-C., giant Scarlet to Yellow base; fine .....	.75
Chatenay, P., Silvery Salmon and Pink shades .....	.35
Chief Seattle, P-D., immense delicate Shell Pink .....	.50
Chieftain, Hyb-D., Crimson Maroon, striped Pink, large .....	.75
Chowchilla, P-D., immense, bright warm Yellow .....	.50
City of Portland, P., gigantic, long stemmed Yellow .....	1.50
Clara Seaton, S., immense Golden Salmon, extra fine .....	.75
Clematis, Century, giant Orchid Pink .....	.25
Collosal Peace, H-C., Kalif form, Cream, to Pink tip .....	1.25
Copper, H-C., giant Orange Yellow, shaded Copper .....	.50
Country Girl, C., very attractive Yellow tipped Pink .....	.30



*PAUL MICHAEL*

*(Decorative)*

*Immense flower of bright apricot and bronze shadings.*

*For full description see page twelve.*

*Price - - - \$1.50*



Crawley Star, Century, Mauve Pink to Yellow base .....	.25
Cream Ball, S., Cream White .....	.20
Cream of the Valley, S., Flesh Pink, tinted Crimson .....	.30
Creamo, Hyb-D., mammoth Cream, suffused pale Salmon .....	.50
Cream Queen, D., magnificent, color of ripe cream .....	1.50
Crimson Rose, D., deep Crimson .....	.35
Crown of Gold, D., Chinese Orange .....	.25
Cuban Giant, S., immense deep Crimson, long stem .....	.25
Curlew, C., Lavender Rose .....	.50
C. W. Bruton, D., giant deep Yellow .....	.20
Dakota, D., new, immense Red Brown .....	2.00
Das Marchen, C., Pink, to Yellow base .....	.25
David Warfield, S., large perfect, Cherry Red .....	.75
Deelighted, S., giant pure White .....	.35
Delicatissima, C., Hydrangea Pink .....	.35
Delice, D., lovely true Pink, but scant blooming .....	.35
Diamond, P., Venetian Pink to Flesh base .....	.30
Dir. Rene Gerard, Coll., large Crimson; Collar White .....	.35
D. M. Moore, Hyb-D., mammoth, deep Mahogany Maroon .....	.35
Dora Fisher, Coll., the only real Pink Collarlette; good .....	.40
Dora, C., Chamois, tipped Apricot, large .....	.75
Dorothy Peacock, S., soft Pink, lighter center, fine cut .....	.35
Dorothy Wotten, C., Rose Pink to Apricot Yellow base; fine .....	.75
Dreer's White, S., very large ball of White quills .....	.25
Dr. H. Sewall, P., giant Fawn, shaded Amber .....	.50
Dr. I. B. Perkins, S., very fine; large pure White .....	.50
Dr. Roy Appleton, C., large Golden Yellow, tipped Salmon .....	.35
Early Morn, P., Lavender, tipped White; large and fine .....	.75
Easton, D., brilliant Turkish Red; fine cutflower .....	.30
Eden, Coil., pure White .....	.35
Electric, C., very odd; Yellow, tipped White .....	.50
Elsa, C., Yellow base, through White, to Rose Pink tip .....	.25
Emblem, C., Delice Pink to Creamy base .....	.35
Empress, P., large Purple Crimson, striped White .....	.30
Erlkoerig, C., shades of Amber and Apricot; large .....	.50
Etandard De Lyon, P., giant deep Purple .....	.75
Eureka, C., Violet Crimson, center deep Purple; large .....	.30
Evangel M. Dane, H-C., mammoth Pink and Cream .....	1.50
Eventide, Hyb-C., White, flushed Pink .....	.35
Eveque, D., mammoth deep Lilac, shaded Blue .....	.75
Falcon, C., large, dark Maroon Red .....	.30
Fantastique, P., Crimson and Cream; very striking .....	.75
Feldburg, P., clear paper White; large .....	.35
F. Graham, C., large Yellow Ochre to Salmon tip .....	.30
Field Marshall, D., new large star shape deep Yellow .....	.75
Firefly, D., very free blooming, Intense Red; good stem .....	.40
Flamingo, D., brilliant Rosy Pink, tipped lighter; fine cut .....	.35
Fraulein Budde, P., large, free; soft Mauve Violet .....	.50
Freda Newman, P., Orange Bronze, edged, and suffused Gold .....	.50
French Marathon, C., the most beautiful Purple Cactus .....	.35
Fritziman, P., very large Red, splashed White; fine cut .....	.30
Gaillardia, Cent., mammoth Golden Yellow and Russett .....	.20
Gen'l. Custer, D., Mottled effect, Cream Buff and Pink; striking .....	1.00
Gen'l. Foch, D., large dazzling Scarlet .....	.30
Gen'l. J. B. Seth, H-C., very bright Red .....	.35
Gen'l. Joffre, D., delicate Pink, to White center; large .....	.75
Gen'l. Rosalie Jones, H-C., large Lemon Yellow .....	.75
Genista, C., Amber shaded Gold .....	.25
Germania, P., brilliant Turkish Red .....	.25
Gertrude Manda, D., Rosy Pink, suffused Heliotrope .....	.50
Gigantea, D., light Creamy Yellow; beautiful and large .....	.50
Gloria, Pom., Maroon, Wine and White .....	.25
Glorie De Lyon, S., pure White .....	.25



Gloriana, D., monster Old Gold, darker center; net	1.50
Glory of Leiden, P-D., dark Crimson	.35
Glory of the Garden, P-D., miniature rich deep Orange; fine	.25
Glow, D., large velvet Red; quilled petals	.50
Glueckskind, C., soft Pink and Salmon shades	.35
Golden Era, C., clear light Yellow	.30
Golden Gate, H-C., Gold, overlaid pale Bronze; large	.35
Golden Plover, C., clear rich Yellow	.40
Golden Treasure, H-C., Red Orange, good size	.25
Golden West, C., Old Gold, large and full	.50
Golden West, D., large heavy, rich Yellow	.50
Goldmine, D., large Golden Yellow	.50
Gov. Guild, S., one of the best pure White ball type	.25
Grand Duchess Marie, S., large Buff, overlaid Salmon	.25
Graphic, C., dark Purple, light tips	.30
Hampton Court, P., Rosy Pink; good size	.35
Hanny Van Waveren, P., new, very fine, Mauve Pink	1.50
Harmony, D., clear Pink; serrated petals; very free cut	.30
Henry Maier, D., Yellow, suffused Orange	.35
Henry Patrick, D., large pure White	.35
Henry of Navaree, H-C., large Orange Yellow	.25
H. Hornsfield, P., giant Salmon Pink and Cream	.35
H. G. Newman, D., dark Cherry Maroon; serrated petals	.50
Hochsai, D., mammoth Golden Orange and Bronze	.50
Hon. R. L. Borden, P., giant Golden Amber, shaded Russet	.35
Hort. Budde, P., Oriental Red, large	.35
Hort. Witte, D., very large and fine White	.35
Imperial, S., perfectly quilled Maroon Purple, fine stem	.30
India, Century, giant Oriental Red	.35
Ivanhoe, S., large, perfect shape, flesh White and Pink	.50
Jack Rose, D., color of Gen. Jacqueminot Rose	.10
Jas. C. Gill, P., giant Orange, marked Scarlet	.75
Jane Selby, D., mammoth delicate Mauve	.75
Jean Charmet, D., large Lilac White, edged Lilac	.35
Jean Hardy, C., French Purple, reverse Silver Rose	.35
Jean Kerr, S., large pure White	.50
Jean Wood, D., lovely Creamy Pink; long stem	.35
J. H. Jackson, C., large Maroon	.35
John Elitch, D., large velvet Red	.20
John Green, P., often sold for Geisha; Scarlet and Gold	.35
John R. Baldwin, Hyb-D., Salmon Scarlet; large	.30
John Wanamaker, P-D., Orchid Pink	.40
Keystone, C., Pink, striped Lavender	.30
King Albert, D., giant Royal Purple	1.00
Kiffin Rockwell, D., Yellow edged Bronze, tipped White; net	.75
Kingkole, P., very dark Mahogany Maroon	.50
King of the Autumn, D. & P., Terra Cotta, Amber and Pink	.75
Ia Topa, D., giant light Amber tinted Beryl and Pink	.75
Laura Barnes, P., Monster Red Orange	.50
Lauretta, C., large Yellow and Apricot tipped Rose Pink	.35
Laurine, H-C., smoky Pink, suffused Heliotrope; giant	2.00
Lavender Beauty, D., Lavender, free	.20
Lawine, C., a very fine and free Flesh White	.25
Le Colosse, Hyb-D., mammoth deep Red	.75
Le Mandarin, D., light Cream, tipped Pink, striped Red	.35
Lenore, D., giant Lemon Yellow, rosy reflex	.75
Libelle, C., large wine Red	.25
Le Toreador, D., a magnificent glowing Crimson Red; large, new	2.50
Liberty Bond, D., large Buff, shaded Bronze and Salmon	1.00
Liberty, D., Salmon Scarlet; large	.50
Livermore, H-C., Yellow, heavily suffused Apricot Amber	.50
Lord Minto, C., compact Salmon Pink	.30
Lovely, C., miniature Lilac Pink; blooms very freely	.30

Lovely Ensford, H-C., Old Gold and Orange; similar to Insulinda .....	.35
Lucero, D., Bronzy Buff, shaded Carmine .....	.50
Luna, P., giant Yellow .....	.75
Lundhurst, D., medium sized, long-stemmed, Scarlet .....	.10
Mabel B. Taft, D., Yellow suffused Pinkish Apricot; large .....	.75
Mabel Needs, C., Copper shades .....	.35
Mad. Bernhardt, P., Oriental Red; reverse Gold .....	.50
Mad. H. Cayeaux, C., large clear Pink, lighter center .....	.25
Mad. H. Furtado, Hyb-D., large, pure White .....	.35
Mad. Vanden Daele, D., fine Silvery Pink, shaded Cream .....	.25
Mad. Van Loon, P., Orange Red, large size .....	.50
Magician, P., very free, large, deep Mauve Pink .....	.30
Maiden Lady, S., attractively mottled Purple and White .....	.15
Manitou, D., giant Amber, edged Salmon; short stem .....	.50
Manzanita, S., Lavender Pink; very free .....	.20
Manzanola, D., most dazzling Red of all dahlias .....	.25
Marcella, D., best clear Pink; a grand cutflower; dwarf .....	.75
Mardi Gras, duplex, Scarlet and Gold .....	.35
Marg. Bruant, S., medium size, dwarf; fine White cutflower .....	.25
Maryan, D., massive brilliant Apricot .....	.75
Mary Pickford, S., soft Yellow, edged Pink .....	.25
Mary Garden, D., large Yellow .....	.25
Mary Service, C., Pink and Apricot shades .....	.35
Masterpiece, D., Tango and Old Gold .....	.35
Maude Adams, S., fine White, suffused clear Pink .....	.35
Mauna Kea, D., large, new Orchid shade; very free and finely formed ...	2.00
Mayor Fitz, D., Autumn shades; fine, new .....	2.50
Melody, C., large clear Yellow, heavily marked White .....	.60
Meteor, S., brilliant Scarlet Crimson .....	.20
Mignon, P-D., very large delicate Mauve, long petals .....	.75
Mina Burgle, D., large brilliant deep Red .....	.35
Miss Edith Walker, P., large Primrose, tinted clear Pink .....	.35
Miss G. Keeling, P., Salmony Rose Pink; large, free .....	.30
Miss Helen Hollis, S., large deep Scarlet .....	.40
Miss Leota Cota, C-P., giant Cream Buff and Pink .....	1.50
Miss M. McCulloch, D., deep Yellow, heavily overlaid Red .....	.25
Miss Nellie Able, P., large dull Creamy Salmon and Crimson .....	.50
Mrs. Atherton, D., mammoth clear deep Yellow; free .....	1.00
Mrs. C. B. Thompson, duplex, more Pink than Chatenay .....	.25
Mrs. C. G. Wyatt, C., pure White .....	.35
Mrs. C. H. Breck, C-D., Yellow, overlaid Carmine, large .....	.50
Mrs. C. Seybold, P., Carmine Pink, each petal edged White .....	.25
Mrs. De Luca, H-C., Yellow and Burnt Orange .....	.30
Mrs. Ella Cline, D., a new White .....	1.00
Mrs. E. L. Hathaway, giant Creamy Salmon Pink; fine cut .....	.50
Mrs. Hartong, Hyb-D., Amber Bronze Pink; large, very free .....	.15
Mrs. H. L. Corbett, P., soft Pink, tinted Lavender; large .....	.35
Mrs. Hugh Dickson, P., light Salmon to Buff Pink base; free, fine .....	.50
Mrs. John Gribbel, P., light Salmon Pink, shaded Amber and Salmon ...	.50
Mrs. J. W. Wilkinson, C., Pink to Yellow base .....	.35
Mrs. Oppenheim, H-D., very large White, overlaid Mauve .....	.75
Mrs. Popp, P-D., giant Rose Salmon, shaded Gold .....	.75
Mrs. R. E. Scales, Hyb-D., Yellow; serrated petals .....	.25
Mrs. T. A. Munro, H-C., dwarf; giant Amber and Old Gold .....	.75
Mrs. T. B. Ackerson, Hyb-D., White, Yellow and Red; large .....	.75
Mrs. T. J. Wodall, C., Primrose, to Carmine Pink tips .....	.35
Mrs. W. E. Whitney, P., Rosy Lilac over Yellow ground; large .....	.50
Modesty, P., beautiful color; Naples Pink to Yellow base; free .....	.35
Monarch, C., Oriental Red, tipped Purple .....	.50
Mons. Burel, S., large Apricot; strong growth .....	.30
Moonbeam, D., attractive Canary Yellow; good size .....	.50
Morocco, D., large Purple, tipped White .....	.30
Mt. Moriah, C., large new Salmon, shaded Amber .....	.75



**SHANNON**

*(Decorative)*

*Deep golden orange, overlaid with a silvery sheen.*

*For full description see page thirteen.*

*Price - - - \$2.00*



Myra, S., Shell Pink, shaded Rose .....	.15
Nantwich, C., Red Orange, waved petals .....	.35
Naomi, Hyb-D., free, fine stem; Buff, suffused Naples Pink .....	.35
Neptune, P., dark Autumn; very free and fine cutflower .....	.35
Nerthus, H-C., light Old Gold, shading out to Mauve .....	.35
Ninigret, P., deep Crimson, reverse Pink; large .....	.35
Noir Alvarez, D., deep Oxblood; large .....	1.00
None Such, S., mammoth size, dark rich Cherry .....	1.00
Norma, S., large Orange Buff .....	.35
Nubian, C., Maroon Red, shaded Scarlet .....	.30
Nymphaea, C., Pink, White center; Water Lily shape .....	.15
Oban, D., Mauve shaded Fawn .....	.20
Ocean Spray, D., large, full, Cream White .....	1.00
Old Gold, P-D., giant, pure Old Gold .....	1.00
Orange Century, Terra Cotta Orange; fine for bouquets .....	.25
Orange Pearl, D., Salmon Orange, marked Cream; large .....	.25
Oregon, S., large Salmon Buff .....	.20
Oregon Beauty, P-D., very large, free, Oriental Red .....	.35
Pacific, D., large Orange Cream, overlaid Pink .....	.75
Pacific Glow, P., mammoth Pink, veined Yellow; net .....	1.50
Pape Charmet, D., large, rich Maroon .....	.35
Paul Bonyon, D., large Salmon, shaded Orange .....	.50
Paul Grampel, D., brilliant Scarlet; large fine cut .....	.35
Pearl, S., large light Silver Pink .....	.20
Penelope, S., White, center tinted Lilac; good cutflower .....	.15
Pennant, P., strikingly brilliant Red, splashed White .....	.50
Perle D'Or, C-D., White, tinged Mauve; cleft petals .....	.25
Persephone, H-C., pure White; attractive shape .....	.30
Phenomenal, P., large Red, Purple, Violet, Yellow and White .....	.75
Phenomene, D., Salmon Pink; good size .....	.35
Pink Abundance, C., large, free, light Pink .....	1.00
Pink Gem, D., giant light Rose Pink; fine stem .....	.35
Pink Perle, C., very beautiful Pink, tipped White .....	.30
Pink Perfection, D., a true Pink Hortulames Fiet; massive .....	1.00
Pride of Portland, P., a finer Geisha .....	1.50
Prime Donne, H-C., White, tinted Violet; dwarf; large .....	.75
Princess Juliana, P-D., reliable pure White .....	.35
Princess Mary, D., one of the most beautiful; vivid, soft Pink .....	.50
Princess Victoria, S., Primrose Yellow .....	.20
Purple Manitou, Hyb-D., deep Purple; large .....	.35
Purple Robe, C., Maroon Purple; velvety .....	.35
P. W. Jansen, P., striking large Salmon Rose, dusted Gold .....	.30
Queen Elizabeth, P., large, free Lavender Cerise .....	.40
Queen Emma, P., Hollyhock Pink; large .....	.30
Queen Esther, P., large; lovely Dubarry Red .....	1.00
Queen Mary, D., bright Shell, large; pleases everybody .....	.20
Queen of Belgians, S., White, faintly suffused Salmon Pink .....	.20
Queen of Hearts, C., Ivory, White and Yellow .....	.25
Queen of Yellows, S., one of the best Yellows .....	.20
Randen A. Kartini, D., giant Salmon, shaded Lilac and Mauve .....	.75
Rapier, H-C., magnificent, large Old Gold .....	1.00
Rainbow, C., soft Pink .....	.35
Red Hussar, S., medium size, Scarlet .....	.10
Red Mantle, P-D., large, very fine Red .....	.35
Reve D'Amour, D., Salmon Rose, large, new and fine .....	2.50
Rev. T. W. Jamieson, C., Salmon base tipped Mauve Pink .....	.35
Rheinischer Frohsinn, C., large Cerise, White base .....	.50
Riese Von Stuttgart, D., giant Blood Red .....	.35
Rose Gem, D., Cameo Pink; large and free .....	.75
Rose Mary Michael, D., Rosy Carmine and Pink shades; net .....	1.00
Royal, Coll., the most reliable; Purple Crimson, White collar .....	.15
Royal Purple, D., deep Purple, good size; succeeds everywhere .....	.10
Royalty, C., Orchid Pink good .....	.35





**CIGARETTE**

(H. C.)

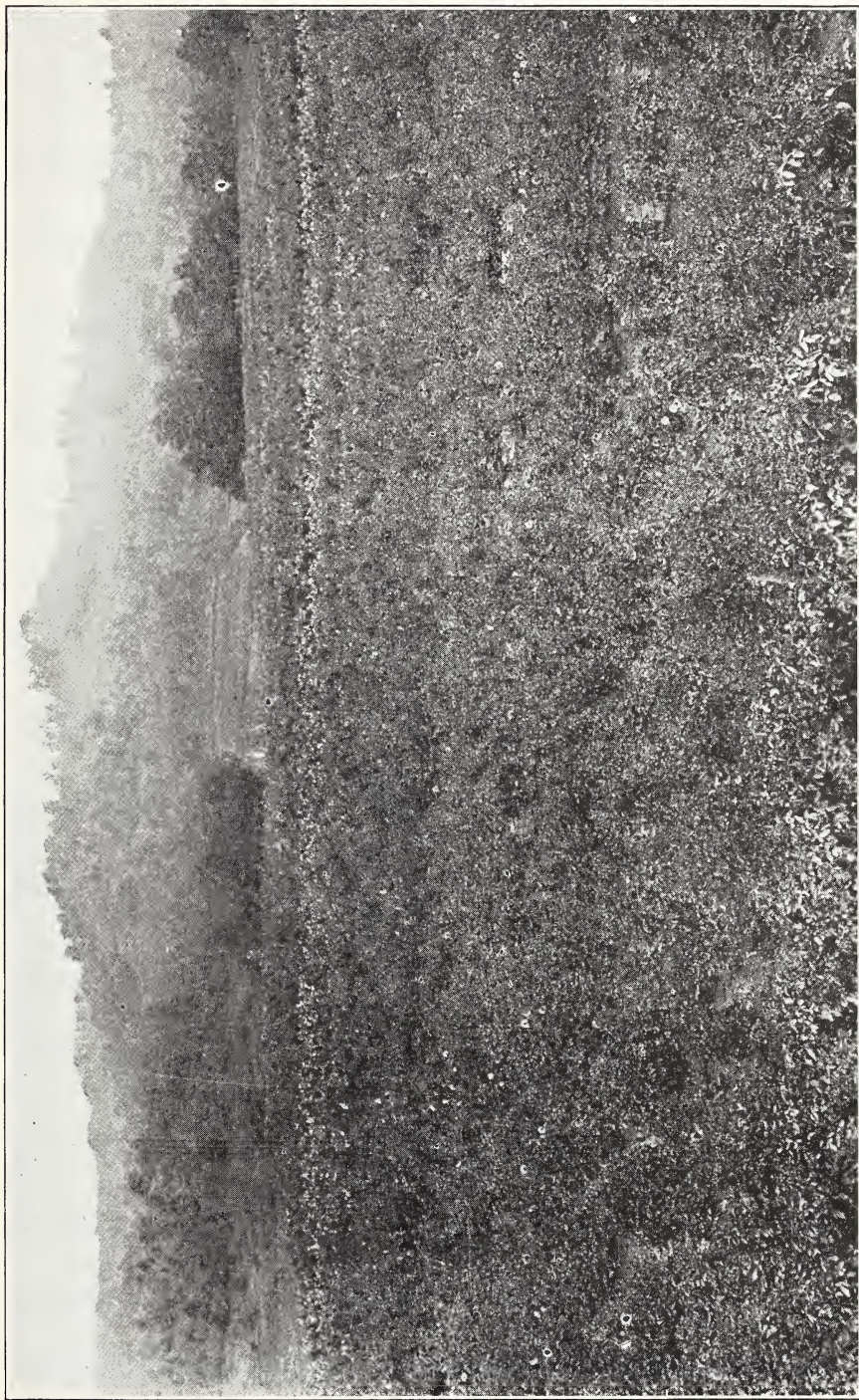
*Rich, ripe orange, tipped strongly with white.*

*For further description see page eight.*

*Price - - - - \$1.50*

Ruth Forbes, H-C., Orchid Pink .....	.35
Salamander, D., large Scarlet .....	.25
Salmonea, D., mammoth pure Salmon, new and good .....	2.50
Salome Jane, D., mammoth Old Gold; tipped Apricot .....	.75
Salmon Queen, D., Orange Salmon; short stem, large, free .....	.30
Schoene Else, C., fine White, tinted Pink .....	.35
Sebastopol, D., clear bright Orange; large .....	.35
Seduction, P., fine large Shrimp Pink .....	1.00
Shelia, P., large Rosy Mauve Pink .....	.50
Shower of Gold, D., new brilliant Yellow to soft Apricot center .....	1.00
Simplicity, C., attractive soft Lilac .....	.50
Snowball, S., pure White, fine stem .....	.20
Souv. De G. Doazan, D., giant brick Red .....	.25
Souv. De Mr. Silvent, D., large Yellow, tipped Scarlet .....	.35
Star of Washington, D., giant Rose Pink to Cream base .....	.75
Stateliness, P-D., Carmine, large .....	.30
Stradella, S., Rose color .....	.25
Success, C., Golden Yellow .....	.35
Sulfurea, D., large, light Sulphur Yellow; waved petals .....	1.00
Sunbeam, D., giant Naples Red, tipped Yellow; massive .....	.75
Sunburst, S., mammoth Salmon Red; some petals Orange .....	.40
Sunset, P-D., Terra Cotta .....	.35
Susan, S., soft light Shell Pink .....	.25
Sweetheart's Blush, C., large clear Pink and White .....	1.00
Sylvia, D., medium sized Pink; light center .....	.10
Terra Cotta, D., giant Cream and Terra Cotta .....	.75
Thais, C., large and beautiful; White flushed Mauve .....	.35
The Denison, C., large, rich Rosy Pink; a beauty .....	.75
Tillamook, S., Blush, tipped Rose; fine color .....	.25
Tunis, D., rich Yellow, outer petals Russet .....	.30
Tustu, C., velvet Maroon Scarlet .....	.50
Ultima Thule, D., large, fine shape; Old Rose .....	.50
Ulysses, D., large, fine, deep Red .....	.35
Uncertainty, D., Red, heavily marked White .....	.20
Uncle Tome, Hyb-D., Maroon, sporting White .....	.20
Vandyck, P., giant Salmon, shaded Heliotrope .....	.35
Velvet, D., velvety Maroon .....	.35
Victor Von Sheffel, C., medium size, light Pink .....	.25
Viking, D., very large, fine Crimson .....	.30
Virginia Maule, Hyb-C., very pale Rose; large .....	.25
Vivian, S., large Cream, tipped Carmine; crinkled petals .....	.30
Wacht Am Rhein, C., very fine light Pink over White base .....	.50
Walta Linforth, P., giant Carmine, shaded Pink .....	.75
Walter Deegan, C., Fiery Orange Red .....	.35
War Dance, H-C., new, massive Scarlet and Gold; net .....	1.50
Warneford, D., fine shape, large pure White .....	.75
Warrior, S., Orange Scarlet; good .....	.15
Wellington, C., large Crimson, tipped Purple .....	.35
White Dove, S., pure White, serrated petals .....	.30
Wildfire, Century, Fiery Red .....	.25
Windlass, C., Amber Rose, streaked Amber; large .....	.75
Wm. F. Gude, D-C., pure White; new .....	.40
Wm. Pierce, S., Flesh Pink; stiff stem .....	.15
Wodan, H-C., Old Gold, through Apricot to Wine tip .....	.50
W. W. Rawson, S., large White, overlaid Amethyst .....	.35
Yale, P., large Crimson Purple .....	.50
Yellow King, P-C., mammoth light Yellow; full flower .....	.40
Yellow Livonia, S., soft Creamy Yellow, tinged Pink .....	.30
Zulu, D., the Black dahlia .....	.20





VIEW OF ONE OF OUR FIELDS, JUST PRIOR TO BLOOMING TIME.

*(This field extends back  $\frac{1}{2}$  mile from the foreground of this picture. Note dahlias on the hill in the far background.)*

## A Few of Our Pompons

Owing to the exceedingly strong (and growing) demand for Pompon Dahlias, we have listed only those of which we have a large stock; but, on request, we can supply many others at a reasonable price. We have 100 different varieties of Pompon Dahlias.

Amber Queen—Extra long stem; Amber, tinted Salmon Pink .....	.25
Ariel—Orange Buff, one of the best for cutting .....	.25
Bronze Beauty—Golden Bronze .....	.25
Catharine—Clear Yellow, very compact .....	.35
Br. Jim—Cream White and Purple .....	.35
Eunice—Flesh Pink, edged Lavender .....	.35
Fascination—Pink and Lavender .....	.35
Gannymede—Buff, overlaid Silver Pink; a beauty .....	.50
Hedwig Pollwig—Deep Red, blotched White .....	.50
Innocence—Pure White .....	.35
Juweltje—Something new and very fine; a lovely Rose Pink color. Very small bloom on long stem .....	\$1.00
La Petite Barbara—Pure White .....	.35
Leader—Lemon, tipped Purple .....	.35
Little Bessie—Cream White, crinkled petals .....	.35
Little Dorothy—White, blotched Pink and Orange .....	.35
Madeline—Yellow, edged deep Rose .....	.35
May Cliff—Light Maroon .....	.35
Nerissa—Light Pink, tinted Mauve .....	.50
Prince Charming—Cream White, overlaid Purple .....	.25
Raphael—Light Red .....	.25
San Toy—Attractive, White tipped, Carmine Pink .....	.35
Snowbird—Miniature pure White .....	.50
Sunbeam—Rich Crimson .....	.35
Wee Gracie—White, faintly tinted Lavender .....	.35
Zoe—Yellow, often tipped White .....	.50









